

CostarMobile User's Guide



Revision: 2.0

Copyright © 2007, Clearview Software. All Rights Reserved.

Table of Contents

Copyright Notice.....	2
Trademarks	2
Software Version	2
Feature List	3
Supported Platforms.....	4
Installation.....	5
Using CostarMobile	6
Command Bar	7
Status Indicators.....	8
Menu Options.....	9
Session Menu	11
New Session Dialog.....	12
Manage Sessions Dialog.....	14
Settings Menu	15
Display Dialog	16
Full Screen Dialog	18
Menus Dialog.....	19
Add Dialog.....	20
Registration Dialog	22
Appendix A – Automated Remote Update	24

Copyright Notice

This document may not be reproduced in full, in part or in any form, without prior written permission of Clearview Software International Inc.

Clearview Software makes no warranties with respect to the contents of this document and specifically disclaims any implied warranties of merchantability or fitness for any particular purpose. Further, Clearview Software reserves the right to revise this publication and to make changes to it from time to time without any obligation to notify any person or organization of such revision or changes.

Trademarks

CostarMobile™ and Co*STAR™, are trademarks of Clearview Software International Inc. Other product names mentioned in this manual may be trademarks or registered trademarks of their respective companies and are hereby acknowledged.

Software Version

This user's manual is for version 2.0 of CostarMobile. Additional documentation may be found in the *CostarMobile Release Notes* that is supplied with the downloaded copy of the software.

Feature List

CostarMobile is a feature-rich emulator that was designed specifically for the mobile user. Features include:

- ANSI, VT220, and TN5250 emulations
- Unlimited number of host sessions
- Full screen display option with password protected lock-out mode
- Auto update option for runtime and end user configuration settings using the Internet or internal server
- Automatic Hotspots for function keys and other keyboard commands
- Fully customizable menu including a tap-hold popup menu
- Status indicators for battery, shift, caps, and 5250 states
- Auto scroll option so that the cursor is always visible
- Font zoom-in and zoom-out buttons

Supported Platforms

CostarMobile is supported on devices running Windows CE4 and CE5.

Installation

All Clearview Software mobile client software is distributed electronically and is packaged as a Zip file. Once you have download the product from our website, follow these instructions to install the product to your handheld device.

After unzipping the downloaded file to your PC, you should have the following files in your local directory:

Setup.EXE
CostarMobile Setup.MSI
CostarMobile_*device*.CAB
CostarMobile-ReleaseNotes.DOC

(where *device* is the OS/CPU platform for your smart client device)

- Make sure your handheld device is connected to your desktop via a USB, serial or wireless 802.11x connection.
- Make sure you have ActiveSync installed. Version 3.8 or higher is recommended. You can get a free copy from Microsoft at:

<http://www.microsoft.com/windowsmobile/activesync/default.mspx>

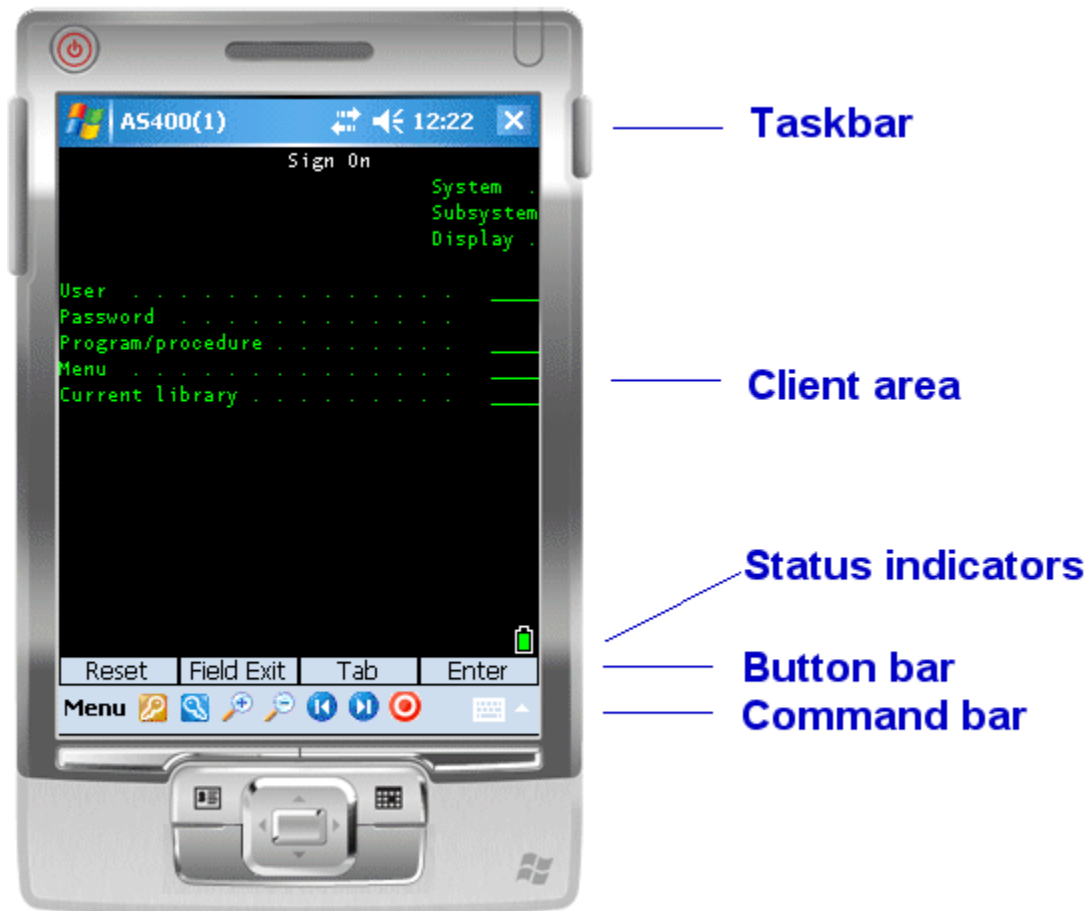
- Make sure your device is connected to the desktop via ActiveSync.
- Run Setup.exe on your desktop.
- Once installed, you will see the following icon in your Programs folder.



NOTE: You can also copy the CAB file directly to the device and run it directly from there to install the product.

Using CostarMobile

The CostarMobile interface consists of the following components.








The following sections describe how to use or customize each of these areas.

Command Bar





The Command Bar contains CostarMobile's context menus and other command functions.



Option	Description
Menu	Displays CostarMobile's main menu. The menu options are covered in the following section.
	Displays the Function key menu. Function keys F1 through F32 are supported.
	Displays the Meta key menu. Meta keys include cursor navigation, page up, page down, escape, and other non-visible keys.
	Increases, or decreases, the font size.
	Scrolls the display to the left or right.
	Scrolls the screen so that the current cursor position is visible. A series of circles will be temporarily displayed to highlight the cursor.

Status Indicators

Additionally, CostarMobile will display the following status indicators in the lower right hand corner of the display.

Indicator	Description
	Lock icon. This icon is displayed whenever the AS400 has locked keyboard input. Clicking the icon sends a Reset command to the AS400 to resume normal keyboard input.
	This icon is displayed when the device's orange button has been pressed. (<i>MC50 only.</i>)
	This icon is displayed when the device's blue button has been pressed. (<i>MC50 only.</i>)
	This icon is displayed when the device's caps lock button has been pressed. (<i>MC50 only.</i>)

Menu Options

Selecting the Menu option displays the following popup menu.



Option	Description
Sessions	The Sessions menu is covered in the next section.
Settings	The Settings menu is covered in the next section.
Connect/Disconnect	Connects or disconnects your session. The text for this menu option will change according to your connection state.
Register	Displays the Registration Dialog.
About	Displays an About Box that lists the current version of CostarMobile as well as the user's IP address. This is helpful for

	remote diagnostics.
Exit	Closes the current session (if one is active) and exits the CostarMobile application.
Active sessions	A list of all active sessions are appended to the main menu. The active session displayed in the Client Area will have a checkmark next to it. Clicking on another session entry will activate the session.

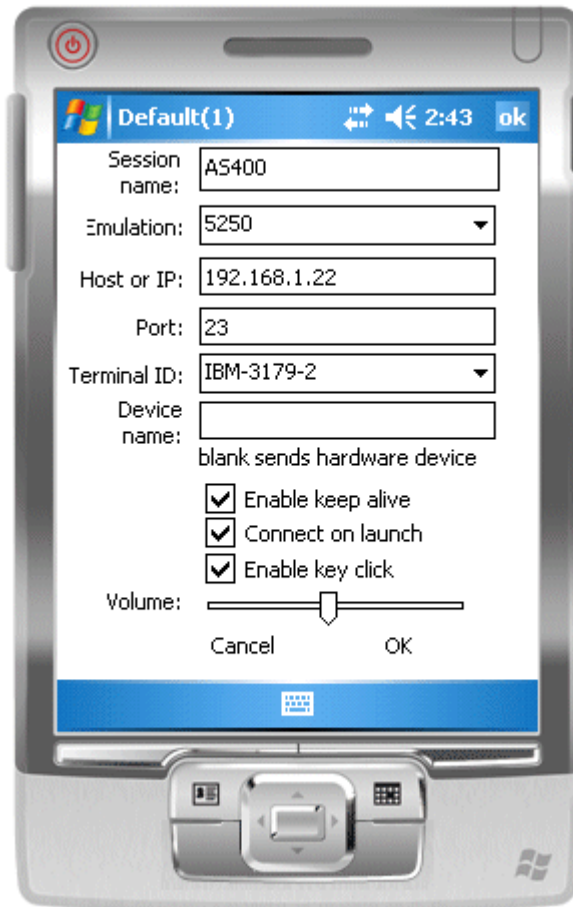
Session Menu

The Sessions Menu allows you to create and modify the settings for host sessions.

Option	Description
New session...	Displays the New Session Dialog.
Manage session...	Displays the Manage Session Dialog.
New <session>	A list of all saved sessions are shown on the menu. Click on a New <session name> to start the session. There are no limits to the number of sessions that can run concurrently.

New Session Dialog

The dialog below is displayed when the New session menu option is selected.



Option	Description
Session name	Enter a name for your session. Session names must consist of valid filename characters. You cannot use any of the following characters -- ? \ / " < > . :
Emulation	Select the emulation from the drop down list. Available emulations are ANSI, 5250 and VT220.
Host or IP	Enter the IP address, or host name, of the server you wish to connect to.
Port	Enter the port number for the connection. Use port 23 for Telnet connections.
Terminal ID	Select the terminal ID response code for the host session.

Device name	Enter a unique device name for your AS400 session. If you do not enter a name, CostarMobile will transmit the manufacturer's internal identifier for your device.
Enable keep alive	Enables the Windows sockets keep alive option for TCP/IP connections.
Connect on launch	If checked, CostarMobile will connect to the host, or IP, defined above. If no host or IP address has been specified, then the Connection Dialog will be displayed.
Enable key click	Plays a brief sound whenever a key or hotspot is pressed.
Volume	Sets the volume level for the key click and message beep sounds.
New <session>	A list of all saved sessions are shown on the menu. Click on a New <session name> to start the session. There are no limits to the number of sessions that can run concurrently.

Manage Sessions Dialog

Use the Manage Sessions dialog to set your default session and to delete sessions.



Option	Description
Delete	Removes the selected session from your device. Any active sessions with that name will be disconnected.
Set as Startup	Sets the selected sessions as the default startup session. CostarMobile will open this session when it is initially launched.

Settings Menu

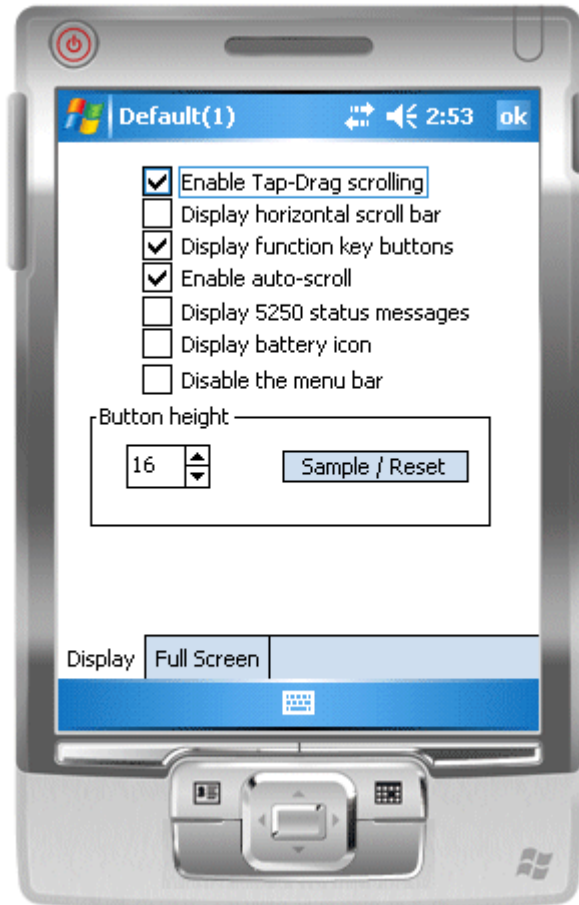
The Settings option displays the following sub-menu.



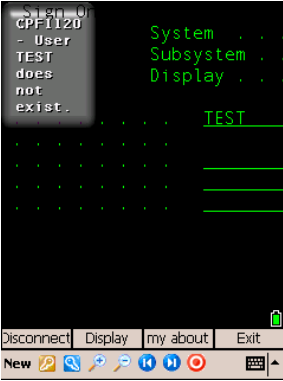
Option	Description
Connection..	Displays the Connection Dialog. This dialog is the same as the New Sessions Dialog, however, you cannot change the name of the session.
Display...	Displays the Display Dialog.
Menus...	Displays the Menu Dialog.

Display Dialog

Use the Display Dialog to configure the screen options in CostarMobile.

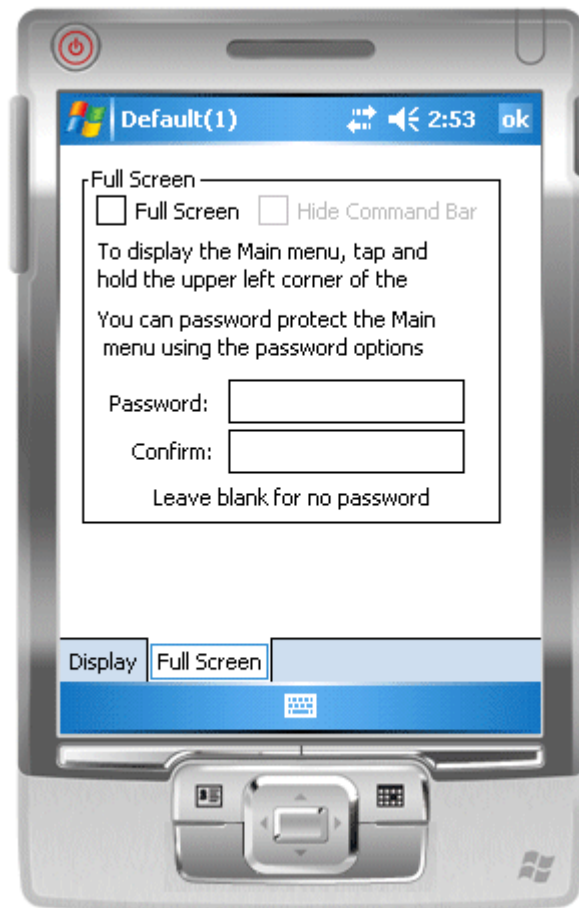


Option	Description
Enable Tap-Drag scrolling	Allows the user to scroll the screen (left, right, top, bottom) using a stylus. If this option is not enabled, CostarMobile will the display standard Windows scrollbars.
Display horizontal scroll bar	If enabled, a horizontal scroll bar is always displayed on the screen (unless the Tap-Drag scrolling option is enabled).
Display function key buttons	If enabled, CostarMobile will display any function keys (F1 through F32) that appear on the AS400 screen as standard Windows push buttons (directly above the Button Bar).
Enable auto-scroll	If enabled, CostarMobile will automatically scroll the screen so that the current cursor position is visible.

<p>Display 5250 status messages.</p>	<p>If enabled, CostarMobile will display any AS400 error, or status, message as a graphical button in the top left corner of the screen. Normally, these error messages appear on the 24th row of the display and may not always be visible to the user. Clicking the graphical button will clear the error display.</p> 
<p>Display battery icon</p>	<p>If enabled, CostarMobile will display a battery strength icon, in the bottom right corner of the screen, to indicate the current status of the battery. The color of the graphic will change according to the percentage of battery power remaining.</p> <p style="text-align: center;"> Green equals fully charged Yellow equals 50% charged Red equals below 20% charged </p> <p>Clicking the battery icon displays additional detail regarding the status of the battery.</p>
<p>Disable menu bar</p>	<p>If enabled, the Menu bar (New) and all of its sub-menus are disabled.</p>
<p>Button height</p>	<p>Use this option to set the height (in pixels) of the Button Bar and Function Key buttons.</p>

Full Screen Dialog

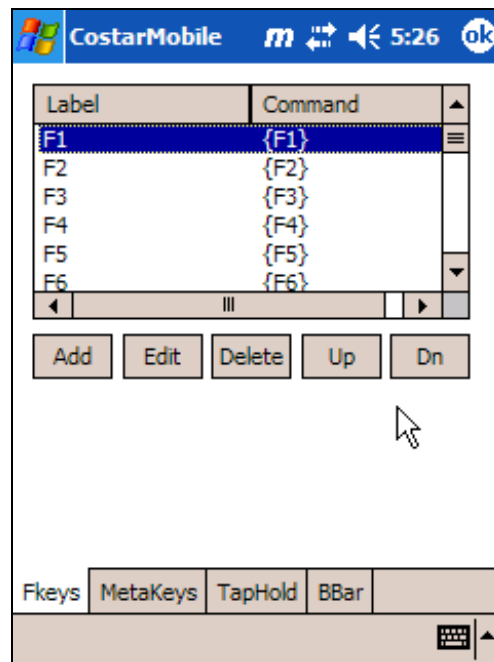
Use the Full Screen dialog to maximize the CostarMobile display area and/or to lock down the device.



Option	Description
Full Screen	The CostarMobile title bar will be removed from the display.
Hide Command Bar	Removes the command bar from the display. To access the CostarMobile menu, tap and hold your stylus in the upper left hand corner of the screen. After approximately 1 second, the CostarMobile menu will appear.
Password	If the command bar is hidden, you can password protect access to the CostarMobile menu.

Menus Dialog

Use the Menu dialog to customize the options on CostarMobile's Function Keys, Meta Keys, Tap Hold and Button Bar.



Option	Description
Add	Use the Add button to insert new entries into the menu. The Add dialog is covered in the following section.
Edit	Use the Edit button to modify existing entries.
Delete	Use the Delete button to remove existing entries.
Up / Dn	Use the up and down buttons to move the selected entry to a new location in the menu.

Add Dialog

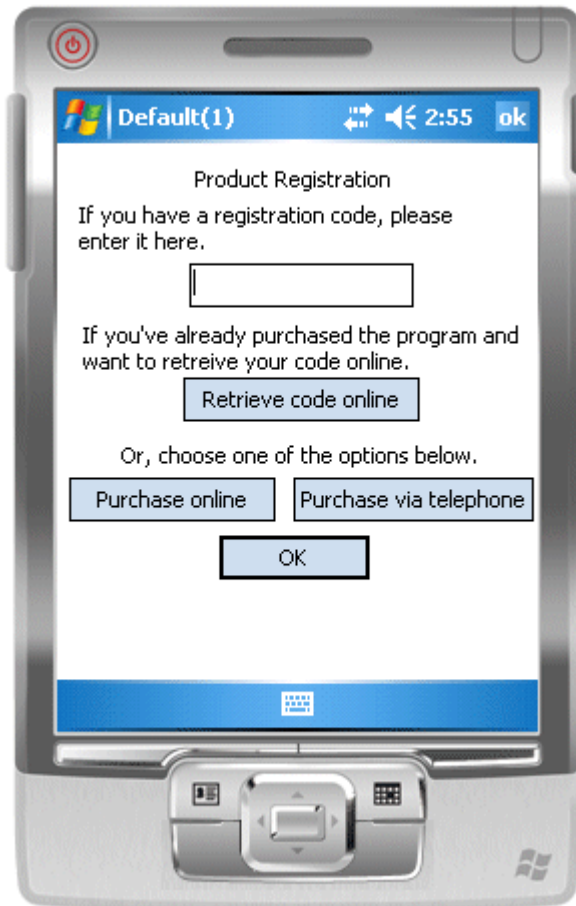
Use the Add option to insert commands and/or keystrokes into the CostarMobile menu option.

Option	Description
Label	This is the text that will appear in the menu option.
Command	<p>Menu commands consist of</p> <ul style="list-style-type: none"> Keystrokes Function / meta keys Menu commands Executable programs and/or files. <p>The command string may consist of any number of keystrokes and/or function keys, however, you may only insert one Menu command or one Executable program per command entry. To insert a control character, enter a caret (^) followed by the letter. For example, a ^M would send the control character 13 to the</p>

	host.
Insert key	Inserts the selected function, or meta, key into the command.
Insert menu	Inserts the selected menu option into the command.
Cancel	Abandons changes and closes the dialog.
Add	Adds the current entry and redisplay the Add dialog.
OK	Adds the current entry and closes the Add dialog.
Browse...	Opens a browse dialog and inserts the selected program, or file, into the command.

Registration Dialog

Unregistered copies of CostarMobile are limited to 30 minutes of connectivity. After 30 minutes, the user is prompted to close the session and disconnect from the host.



Option	Description
Registration code	Enter the registration code you have obtained for your copy of CostarMobile. You will not need to re-enter the code unless your device has been hard reset.
Retrieve Code Online	Use this option if you have previously registered CostarMobile but have forgotten your registration code. You must have an active Internet connection to retrieve the code.
Purchase Online	Launches a browser session that connects to CostarMobile's web site. Follow the instruction on the web page to complete your purchase.

Purchase via telephone	Displays the phone number for CostarMobile sales.
------------------------	---

Appendix A – Automated Remote Update

Summary

In order to facilitate administrative configuration and system updates, CostarMobile offers a remote change management feature that automatically downloads and installs updates via an Internet connection. The remote update feature uses the standard HTTP protocol and is “firewall friendly”.

The update process works as a non-intrusive ‘background’ task and will not impact the performance or use of the CostarMobile software during regular use. In the event that an Internet connection is not available, or there are network latency issues, no error messages are displayed and no interruption of service will take place.

Requirements

- Internet Web server to host the update files. This server can reside inside or outside of the corporate firewall.
- CostarMobile version 1.0.2 or higher

Implementation

The automated update feature is enabled by the *UpdateUrl* entry in the *Settings.txt* configuration file. (The *Settings.txt* file contains all CostarMobile configuration settings and is located under the \Program Files\CostarMobile folder on your Pocket PC.)

The *UpdateUrl* entry has the following format:

```
[Settings.txt sample]
UpdateUrl=<fully qualified URL>/<update configuration file>
```

Example:

```
UpdateUrl=http://www.clearview-
software.com/downloads/costarmobile/mc50.txt
```

The Update Configuration File is a user-defined file that specifies the names and the version numbers of the files to be updated. This file supports two entries, *settings* and *runtime*, each of which are optional, and have the following format:

```
settings=settings.txt,<version number>  
runtime=<cab file>,<version number>
```

Example:

```
[mc50.txt sample]  
settings=settings.txt,1.0.0  
runtime=costarmobile_ppc.armv4.cab,1.0.4
```

Note that the actual name of this file is entirely arbitrary – *mc50.txt* is only used as an example in this document. For example, you might have different file names for specific groups of users and/or devices.

Settings

The *settings=* entry must contain the ‘settings.txt’ filename followed by a user-defined version number. If the specified version number is greater than the version installed on the client’s device, then the remote settings.txt file will be parsed and ***merged*** into the user’s configuration file. Note that the user’s configuration file is not simply replaced by the update. Only the configuration entries that are specified in the remote settings.txt file are used during the merge process. This allows the administrator to replace specific entries without reconfiguring all settings. For example, you can update just the user’s menu items without changing the IP address of their host system.

Runtime

The *runtime=* entry specifies the CAB file and version number for the CostarMobile executable. If the specified version number is greater than the version currently running on the device, the update will be downloaded and the software will be updated. (Please see the Sample Screens below). Note. It is critical that the version number specified for the *runtime=* entry match the version number of the CAB file update. The version number can be viewed using the *About* option from CostarMobile’s main menu.

ForceUpdate

By default, the user will have the option to cancel the update for the current session (in the event that it is an inappropriate time to interrupt their current session). They will continue to receive the update notification each time CostarMobile is launched however).

To override the option to cancel updates use the *ForceUpdate* option in the Settings.txt file. If this entry is set to ‘1’, then the user cannot continue without updating.

Example:

```
[settings.txt sample]
```

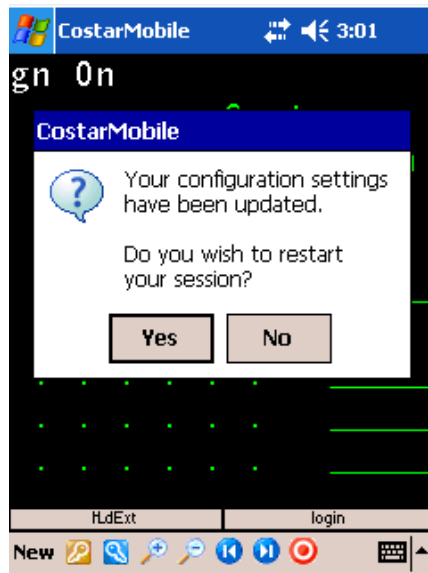
```
UpdateUrl=http://www.clearview-  
software.com/downloads/costarmobile/mc50.txt  
ForceUpdate=1
```

Sample Screens

The following screen captures illustrate the implementation of the remote update feature.

Settings Update

The following screen is displayed if the user's configuration (settings.txt) has been updated. The user will be prompted to restart the session (in the event that the host IP address has changed).



Runtime Update

If a runtime update is available, the user will be prompted to install the update. (Note that the option to Cancel can be disabled via the *ForceUpdate* option.) Pressing the OK button will close the CostarMobile session and the installation process will be invoked automatically. Currently, the user must manually restart CostarMobile once the installation has finished (this requirement may be removed in a future release).

